

# CT series

Sealed toggle switches - flat case



## DISTINCTIVE FEATURES

Completely sealed switching chamber

Flat case

UL approved



## ENVIRONMENTAL SPECIFICATIONS

- Front sealing to IP67.
- Operating temperature : -40 °C to + 85 °C (-40 °F to +185 °F)



## ELECTRICAL SPECIFICATIONS

- Max. current/voltage rating with resistive load and electrical life at full load: see table below
- Initial contact resistance : 50 mΩ max.
- Insulation resistance : 1,000 MΩ min at 500VDC
- Dielectric strength : 2,500 Vrms 50 Hz min. between terminals  
3,000 Vrms 50 Hz min. between terminals and frame

ELECTRICAL RATING AND LIFE

FUNCTIONS	DIRECT CURRENT	UL
ON-OFF and ON-ON	10,000 cycles 15 A 28 VDC resistive 5 A 28 VDC lamp load	10 A 125/250 VAC according to UL 61058-1 and CAN/CSA-C22.2 NO. 61058-1:17
OTHER FUNCTIONS	10,000 cycles 15 A 28 VDC resistive 3 A 28 VDC lamp load	



## GENERAL SPECIFICATIONS

- Mechanical life : 40,000 cycles
- Torque : 2 Nm (1.47 Ft.lb) max. applied to nut
- Panel thickness : see "Mounting Accessories" on the following pages

The company reserves the right to change specifications without notice.



# CT series

Sealed toggle switches - flat case



## MATERIALS

- Case : phenolic resin UL94-V0
- Bushing and cover : zamac
- Actuator : bright nickel or Polyamid
- Contacts : silver alloy

## AGENCY APPROVAL



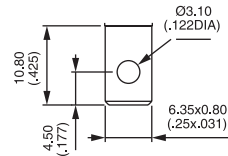
File E83438

**Availability :** consult factory for details of approved models.

**Marking :** to order switches marked UL, complete appropriate box of ordering format.



## TERMINALS

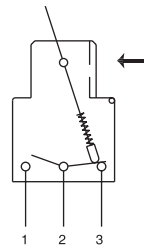


Solder lug/quick connect

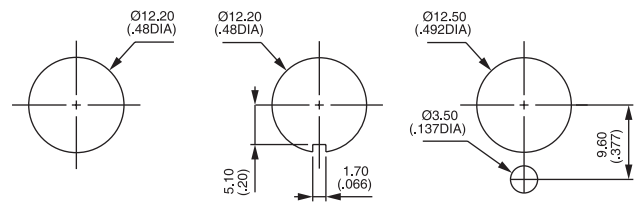


## ELECTRICAL FUNCTIONS

→ KEYWAY

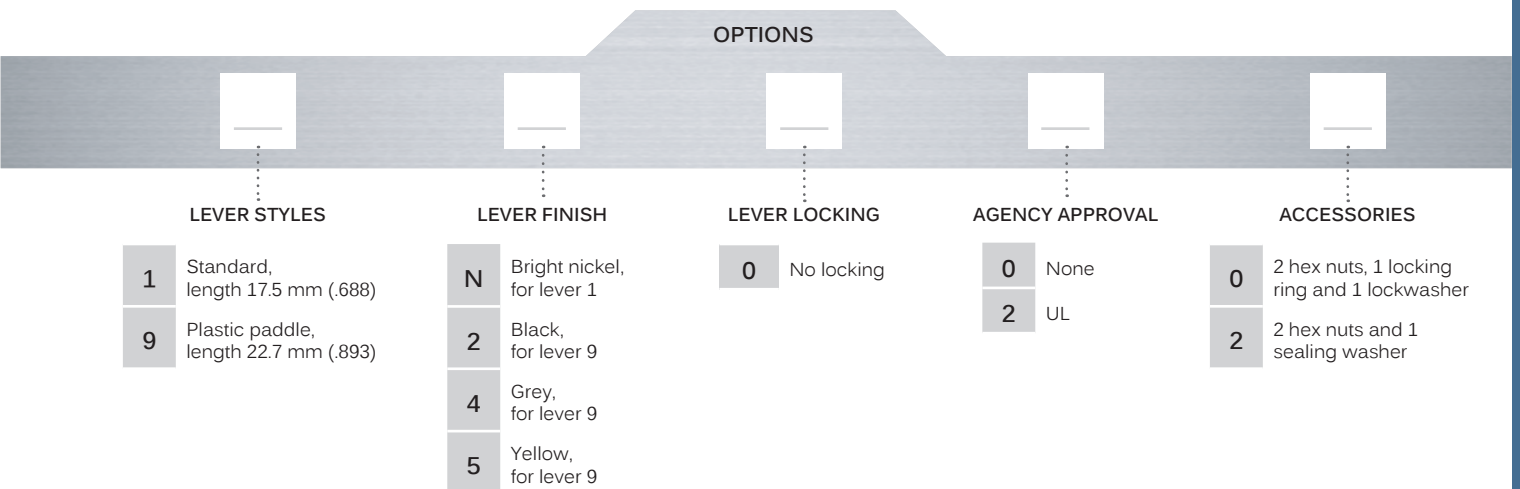
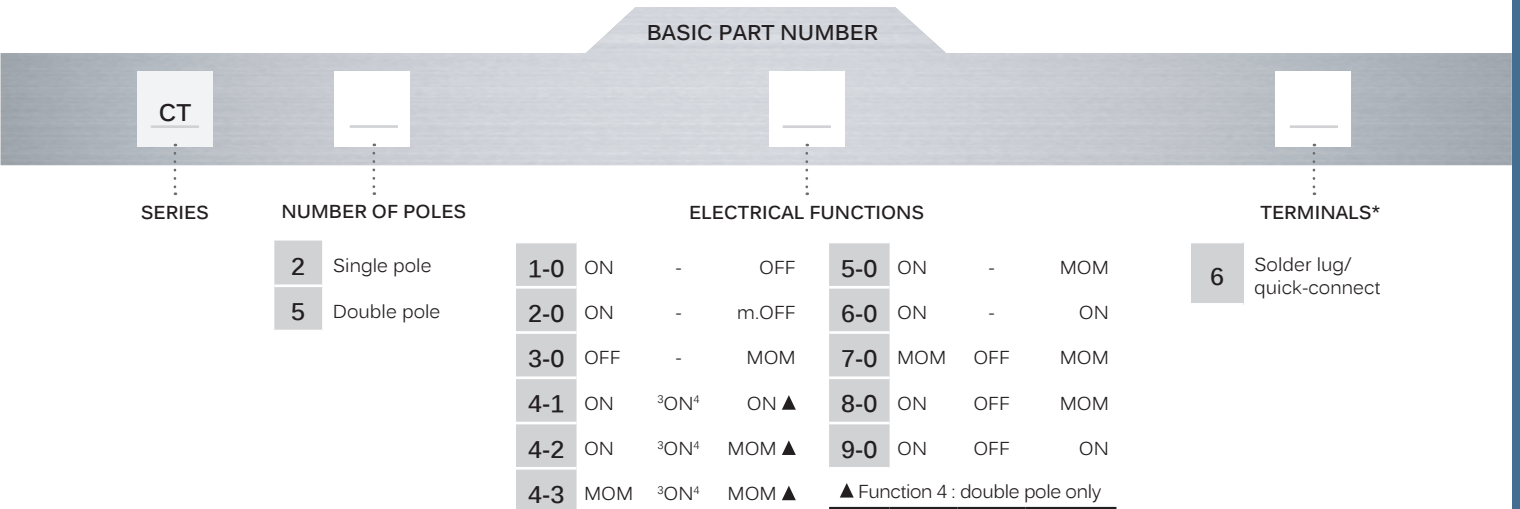


## PANEL CUT-OUT





### BUILD YOUR PART NUMBER



### ABOUT THIS SERIES

On the following pages, you will find successively basic part numbers of switches and options in the same order as in above chart.

⚠ **Notice** : please note that not all combinations of above numbers are available. Refer to the following pages for further information.

🔒 **Switch guards** are available to prevent inadvertent lever operation. On request.

**Dimensions:** first dimensions are in mm while inches are shown as bracketed numbers.

\*Packaging unit : 15 pieces for solder lug/quick-connect (6)

# CT series

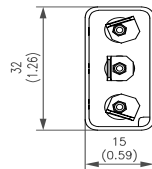
Sealed toggle switches - flat case

## SOLDER LUGS AND QUICK-CONNECT TERM. SINGLE POLE

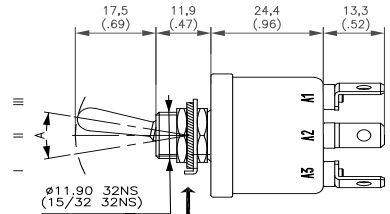


	Angle of throw (A)	III A2-A3	II	I A1-A2
CT21-06	22°	ON	-	OFF
CT22-06	22°	ON	-	m.OFF
CT23-06	22°	OFF	-	MOM
CT25-06	22°	ON	-	MOM
CT26-06	22°	ON	-	ON
CT27-06	30°	MOM	OFF	MOM
CT28-06	30°	ON	OFF	MOM
CT29-06	30°	ON	OFF	ON

→ KEYWAY



Shown with standard lever

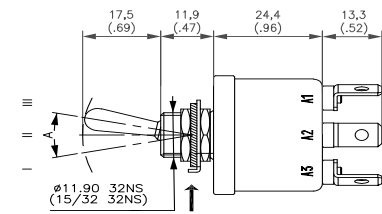
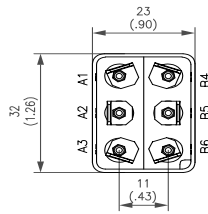


## SOLDER LUGS AND QUICK-CONNECT TERM. DOUBLE POLE



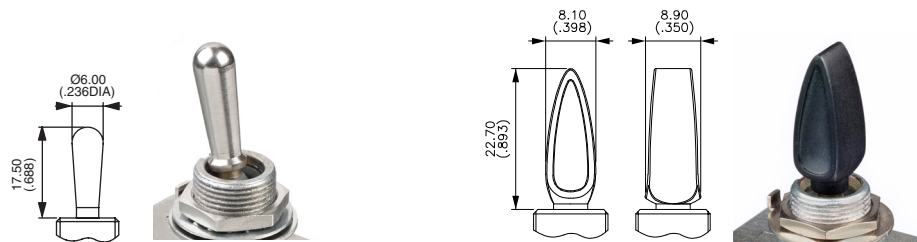
	Angle of throw (A)	III A2-A3 B5-B6	II *A3-B5 **A1-B5	I A1-A2 B5-B4
CT41-00	22°	ON	-	OFF
CT44-10	30°	ON	ON*	ON
CT44-20	30°	ON	ON*	MOM
CT44-30	30°	MOM	ON*	MOM
CT45-00	22°	ON	-	MOM
CT46-00	22°	ON	-	ON
CT47-00	30°	MOM	OFF	MOM
CT48-00	30°	ON	OFF	MOM
CT49-00	30°	ON	OFF	ON

→ KEYWAY



### LEVER STYLES

BASIC P/N



1 Standard

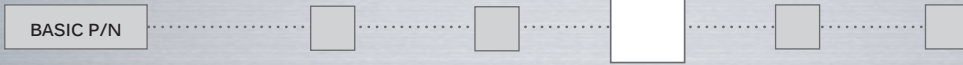
9 Plastic paddle

### LEVER FINISH

BASIC P/N

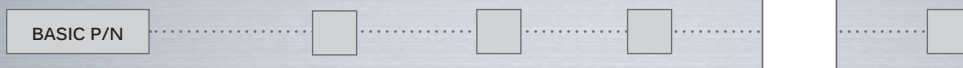
- N Bright nickel (for lever 1 only)
- 2 Black (for lever 9 only)
- 4 Grey (for lever 9 only)
- 5 Yellow (for lever 9 only)

### LOCKING LEVER STYLES



0 No locking

### AGENCY APPROVAL



0 None  
2 UL

APEM has the ability to develop custom configurations. Please contact us with your requirements.

### MOUNTING ACCESSORIES



- 0 For NON-SEALED mounting (panel cut-out fig. 1, 2 or 3)  
2 hex nuts 14 mm (.551) across flats, 1 locking ring U121 or U12, 1 lockwasher U13  
Panel thickness : 5 mm (.196) max.
- 2 For SEALED mounting (panel cut-out fig. 2)  
2 hex nuts 14 mm (.551) across flats and 1 sealing washer U60  
Panel thickness : 4 mm (.157) max.

Special hardware : black cap nut U129. Order separately.

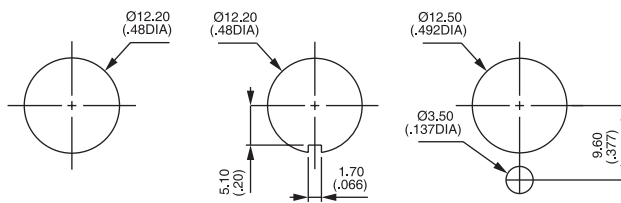


Figure 1

Figure 2

Figure 3