

High contrast Q8 series

High contrast •
Ø8 mm panel mount LED indicators



DISTINCTIVE FEATURES

- 5 mm white diffused epoxy lens
- Prominent and flush bezel styles
- Wire terminations 200 mm



ENVIRONMENTAL SPECIFICATIONS

- IP67 sealing option (EN60529)
- Operating & Storage Temperature Range:
Rear epoxy body: -40 °C to +85 °C (-40 °F to +185 °F)



GENERAL SPECIFICATIONS

- Max Reverse Voltage: 5 V
- Viewing Angle: 30–100° (dependant on model)
- Life Expectancy: 100,000 hours
- Torque: 20 to 25 cNm
- Maximum panel thickness 7 mm
- Insulation resistance : 4,000 MΩ at 500 VDC

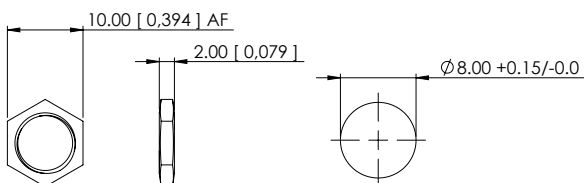


MATERIALS

- Natural anodized bezels
- Black anodized bezels



MOUNTING



The company reserves the right to change specifications without notice.

All LED characteristics are dependent upon environmental conditions. Therefore published data should be considered nominal and subject to variations.



High contrast Q8 series

High contrast • Ø8 mm panel mount LED indicators



ELECTRICAL SPECIFICATIONS

LED COMPONENT SPECIFICATIONS

	Prominent	Forward voltage**	Flush	Forward voltage**
Red	60 mcd	2.0-2.2 V	1120 mcd	2.1 V
Green	100 mcd	2.0-2.2 V	2180 mcd	3.1 V
Yellow	100 mcd	2.0-2.2 V	1120 mcd	2.1 V
Blue	650 mcd	3.0-3.2 V	750 mcd	3.1 V

**These values apply to 2 V option only

Voltage	Operating Voltage (Min to Max)	Operating Current (Typical All Types)
02 (No Resistor)*	1.8 to 3.3 VDC	20 mA max
12 VDC	10.8 to 13.2 VDC	20 mA
24 VDC	21.6 to 26.4 VDC	20 mA
28 VDC	25.2 to 30.8 VDC	20 mA

* Customer to supply resistor for desired operating current.

- The operating voltage must not be exceeded by more than 10% as this will result in reduced life expectancy
- Luminous intensity is measured at 20 mA on a discrete led unless otherwise stated.
- Luminous intensities and color shades may vary within a batch.
- Luminous intensity will be reduced with lower operating current.
- Recommended usage: Homogenous light output that is good for indoor and outdoor applications.

Our regulatory declarations & certifications

In accordance with its QHSE policy and its values, the APEM group applies the most demanding environmental regulations.

- UL Recognition

- REACH & ROHS

- Parc tested

- IP67

- LVD (BS EN 60838 :2017+A11 :2021)*

*Awareness to possible high level of moisture conditions

High contrast Q8 series

High contrast • Ø8 mm panel mount LED indicators



BUILD YOUR PART NUMBER

Q

SERIES

8

MOUNTING HOLE

8 Ø8 mm

—

BEZEL STYLE

P Prominent
F Flush

5

TERMINALS

5 Rear epoxy Wires

—

BEZEL FINISH

AC Anodised Clear
AN Anodised Black

XX

TYPE OF ILLUMINATION

XX Fixed Light

—

LED COLOR

CR Red
CG Green
CY Yellow
CB Blue

—

VOLTAGE

02 No resistor
12A 12 VAC/DC
24A 24 VAC/DC
28A 28 VAC/DC

E

SEALING

E IP67



ABOUT THIS SERIES



Notice: please note that not all combinations of above numbers are available.

• Standard and Bi-Colour are provided in Standard wire length is 200mm, 24AWG UL1061, Red wire denotes anode (+), Black wire denotes cathode (-) for other lengths consult APEM.

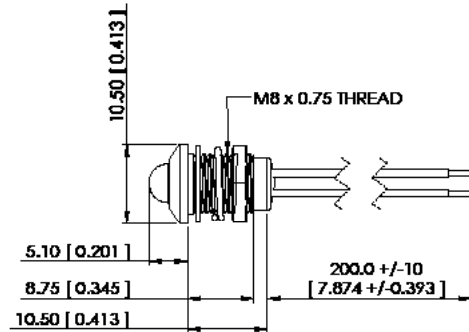
High contrast Q8 series

High contrast • Ø8 mm panel mount LED indicators

PROMINENT BEZEL



REAR EPOXY WIRES



FLUSH BEZEL



REAR EPOXY WIRES

